

LOXONE

Smart Home Pricing Guide

Your smart home starts here.



Adding technology becomes simpler

While the way that we build homes has remained relatively unchanged over the decades, the amount of technology that we're including in them is changing faster than most of us can keep up with. This means installing several lighting circuits per room, a burglar alarm system, more involved HVAC control and much more...

All these separate systems require separate switches and points of control - which prohibits the creation of a unified living experience. Why not find a way to bring it all together as one unit to make your life easier?

If you're planning a new build or renovation, then it's time to consider a simpler option. One that allows the technology in your home to complement your lifestyle over the years to come. One that can adapt as your needs change over time.

We know technology can be scary, but it doesn't have to be. There **must** be a way to improve the experience of living in our homes without sacrificing the peace of mind brought by ease of control, familiarity and reliability.

And there is. It's called **Loxone**.

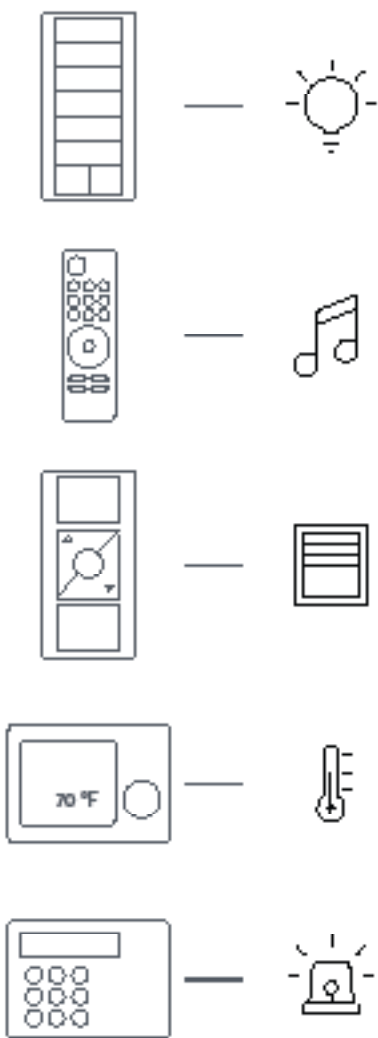
Take Control of Your Home

Loxone Home and Building Automation enhances the way technology operates throughout your home without letting it take over or compromising your sense of control. Imagine adding extra lighting during your kitchen renovation without needing a wall full of switches or having an HVAC system that adjusts room by room without additional buttons cluttering your space.

Turn the pages of this brochure and discover how automation puts you back into control of your life - beyond just buttons and switches.



When adding more becomes a loss of control...



This can quickly become overly complicated.

or

LOXONE



Benefit from a future-proof, fully updatable system

Adapts as your needs change

Breaking down the benefits

Versatile

No compromise, no matter the size. Loxone can add as little or as much functionality as you want.

Ease of use

Reduce the layers of control. Loxone Home Automation is designed to enhance your comfort and convenience.

Adaptable

As your life and the technology around it changes, a Loxone system can adapt along with it.

Privacy

Your personal data is kept secure. We never collect or share sensitive info from within your walls.

Reliable

All hardware and software are designed to work together and last for years to come.

Familiarity

With fewer switches and full app control, all functions work as they should and make sense.

Efficiency

Lighting, HVAC, security and more work in unison with efficiency in mind, reducing energy consumption.

Behind the scenes

All products are designed to remain hidden or complement your aesthetic - rather than distract from it.

Control Everything with a Touch

Adding more technology shouldn't mean adding more switches. Loxone keeps it simple and user-friendly for the whole family while maximizing control over the functions in your home with the Loxone Touch.

Center

The center of the Touch controls lighting. Whether it's to turn the lights on, off or to select different colors.



Corners

The corners of the Touch provide additional control based on your needs. Control your HVAC, music, shading and more from the same place you control your lighting.

One app for total control

To complement the switches in your home, you can also use the Loxone App to conveniently control all features - even when you're not at home. You can also monitor systems or devices, manage access codes and more.



The app interface is intuitively organized into categories and rooms. You can also decide which users can control each feature.

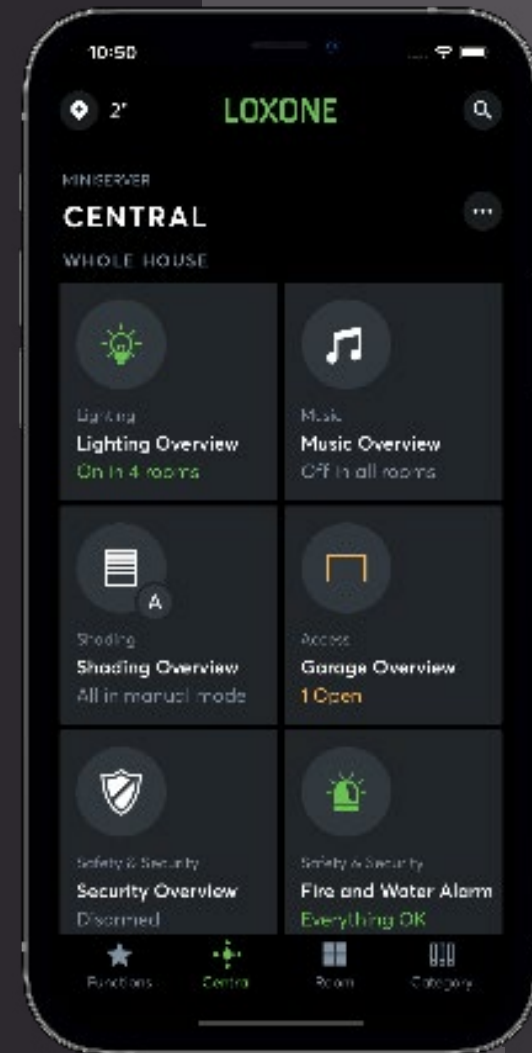
Download the free **Loxone App**:

 [App Store](#)

 [Windows Store](#)

 [Mac App Store](#)

 [Google Play](#)

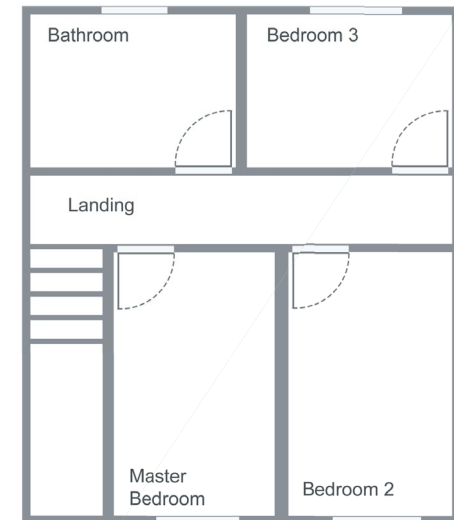
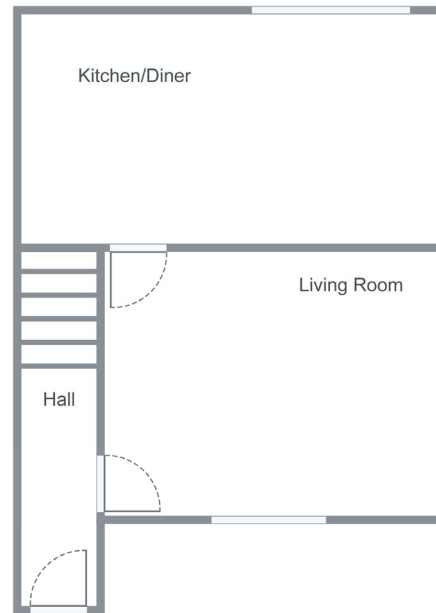


How much does it cost?

When it comes to the cost of automation in your home, you set the price tag based on the level of functionality you require.

Start by speaking with a certified Loxone installer for guidance and a quote.

To give you a clear point of reference, this brochure includes examples based on a 1,200 sq. ft. house with three different options of functionality. Take a look to explore the possibilities and find the right fit for your needs.





Option 1

Starter

Make everyday living smarter with impressive features.

Looking to get started with core elements of home automation? Enjoy the benefits of living in a smart home with the Starter option. This package includes a variety of features in the kitchen, master bedroom and bathroom - with plenty of room for future upgrades.

Included in Starter

37 features

Lighting

- » Motion-triggered lighting
- » Lights turn off automatically when not needed
- » Factors in natural light levels
- » Lights stay on if noise is detected in that room
- » Lights can mimic occupancy when you're out
- » Conveniently switch off all lights from one switch when leaving your home
- » Central monitoring and control of lighting in the app

Central Functions

- » Night Mode
- » All Out Mode
- » Away Mode
- » Operating Modes
- » Room Off

Security

- » Presence-based, self-monitoring burglar alarm
- » Easy day and night arming options
- » App notifications
- » Lights can flash throughout your home when burglar alarm is triggered
- » Delayed arming feature
- » Multi-stage alarm
- » History logs
- » Optional panic buttons
- » Central monitoring and control of alarm in the app

Other

- » Free app control for the whole family
- » System Status messages
- » Simple, unified switches
- » Option to create your own automatic rules and sequences
- » Sensors integrated for water detection
- » Secure app connection with the option to connect remotely

HVAC

- » Temperature and humidity monitoring
- » Individual room control
- » Intelligent learning
- » Temperature is maintained when you're in the room
- » Frost Protection, Overheat Protection
- » Bathroom ventilation control
- » Weekly schedule with holidays and custom calendar entries
- » Optional maintenance reminders
- » Notification of changes to the system
- » Central monitoring, statistics and control in the app

For your convenience, descriptions of these features are explained in the glossary of this brochure.



Option 2

Elevated

**Advanced technology
puts your lifestyle front
and center.**


The Elevated option includes everything from the Starter option with additional functionality. Smart features extend throughout the whole house providing the luxury of an elevated lifestyle for the whole family. You can, of course, upgrade with additional features in the future.

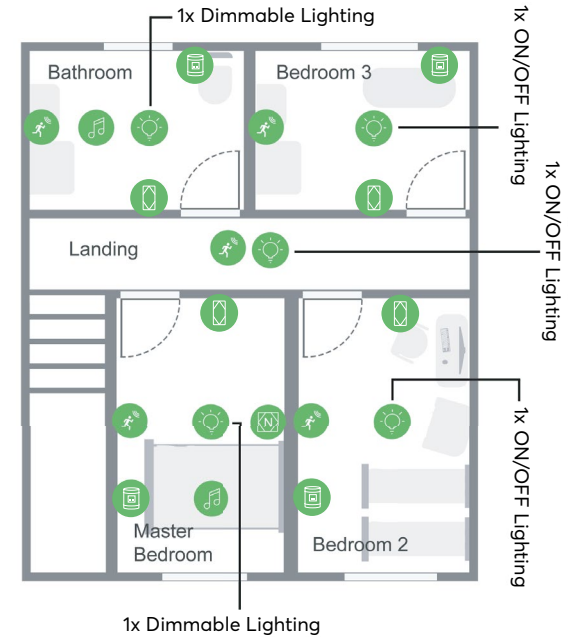
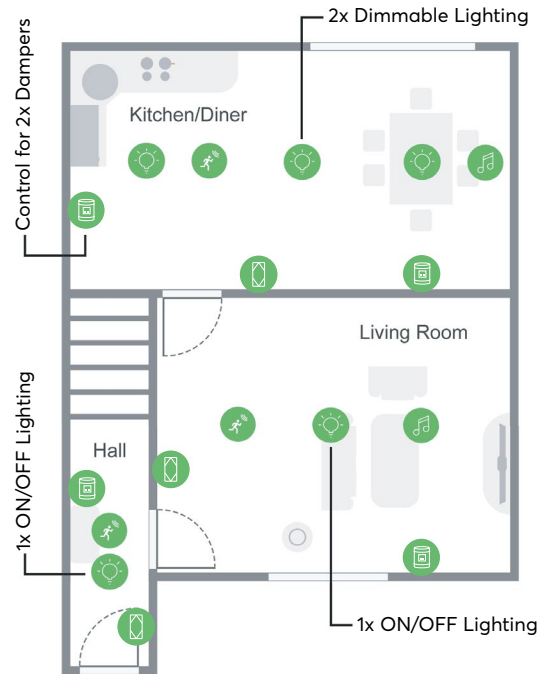
Option 2

Elevated

From **\$7,700**

This option offers you even more functionality with the addition of dimmable lighting, some colored lighting and multiroom audio.

-  Switches
-  HVAC Dampers
-  Presence Sensors
-  Alarm Clock Nightlight
-  Speakers



Note: Please refer to the appendix of this brochure for an overview of the components. This price reflects the recommended cost for Loxone hardware only and does not include planning, installation, configuration or any aftercare, which may vary for each project. Installation must be carried out by a certified installer (Loxone Partner).

Included in Elevated

54 features

This option includes all of the features listed in Option 1, as well as the following:

Multiroom Audio

- » Play music in four different rooms
- » Music can start automatically when entering a room
- » Control music from a Touch switch
- » Central control of music in the app
- » Option to play predefined messages based on events in your home
- » Record announcements to play in different rooms
- » Stream audio from Spotify & TuneIn
- » Play from your personal music collection
- » Support for Apple AirPlay
- » Alarm clock functionality with your chosen playlist
- » Set individual music favorites in each room
- » Conveniently switch off all music from one switch when leaving your home

Security

- » All speakers will sound if burglar alarm is triggered

Lighting

- » Dimmable lighting in three rooms
- » Night Mode lighting
- » Undercounter LED lighting in the kitchen

Other

- » Smart alarm clock with bedside control of lighting

For your convenience, descriptions of these features are explained in the glossary of this brochure.



Option 3

Premium

**Experience the highest level
of all-around living comfort.**









The Premium package takes convenience and comfort to the next level, surpassing even the Elevated option. With advanced automation seamlessly integrated throughout the home, it is designed to meet your specific needs while redefining what a smart home can be. Even at this high level of sophistication, the system remains flexible, leaving room for future upgrades as your lifestyle evolves.

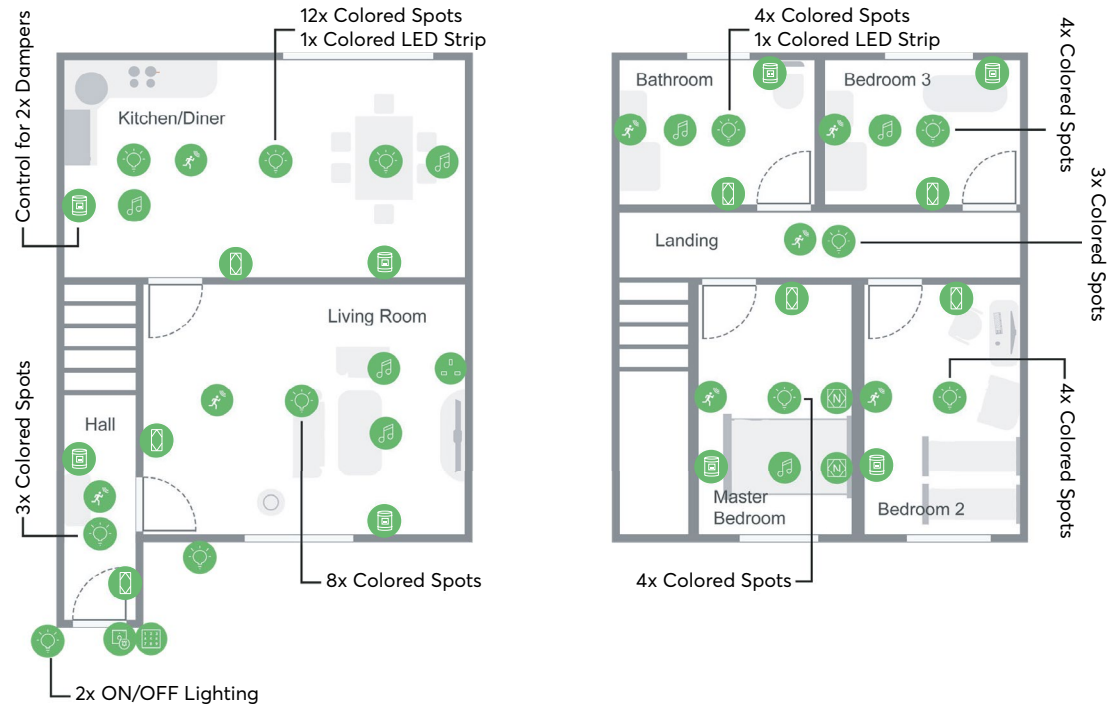
Option 3

Premium

From **\$18,000**

With the addition of a video intercom, you get extensive functionality with a refined finish. You also get colored, dimmable lighting throughout the home and more rooms with audio.

-  Switches
-  HVAC Dampers
-  Presence Sensors
-  Alarm Clock Nightlight
-  Speakers
-  Intercom
-  Access Code Keypad
-  Countertop Control Element



Note: Please refer to the appendix of this brochure for an overview of the components. This price reflects the recommended cost for Loxone hardware only and does not include planning, installation, configuration or any aftercare, which may vary for each project. Installation must be carried out by a certified installer (Loxone Partner).

Included in Premium

74 features

This option includes all of the features listed in Option 1 & 2, as well as the following:

Lighting

- » Colored, dimmable lighting in every room
- » Colored, dimmable LED cabinet lighting in kitchen & bathroom
- » Colored, dimmable pendant lighting in kitchen/diner
- » Option for automatic porch lighting
- » Option for lights to flash when doorbell is pressed

Other

- » Additional smart alarm clock for bedside control of lights
- » Integrated weather data

Access

- » HD video intercom to interact with visitors
- » Connect to your intercom remotely in the app
- » Automatic answering message
- » Manage access and recent visitor history in the app
- » App notifications when someone rings the doorbell
- » Keypad with fob reader to disarm burglar alarm

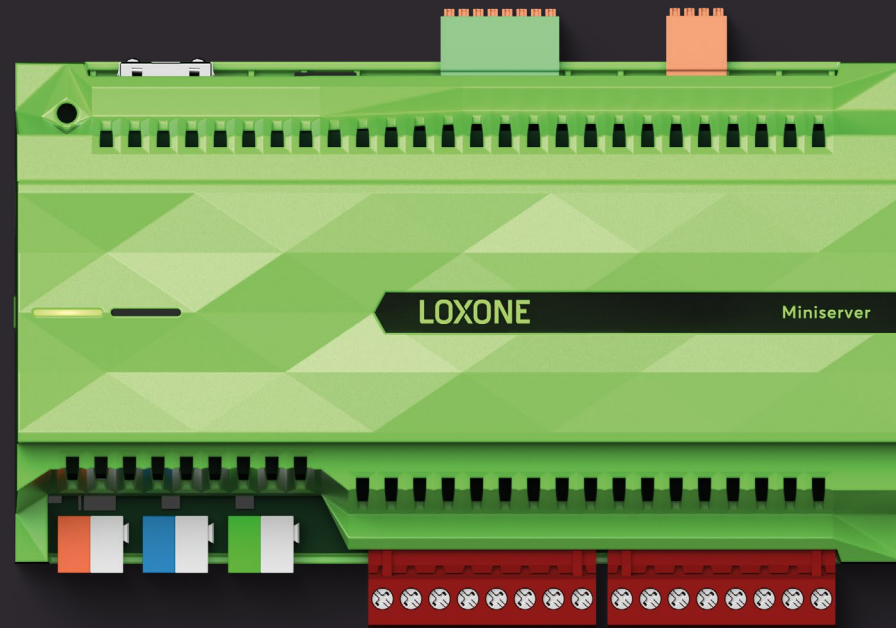
Multiroom Audio/ Multimedia

- » Play music in five rooms
- » Additional speakers in kitchen/dining room & living room
- » Speakers play a notification when you have a visitor
- » Option to automatically stop music in the living room when the TV is turned on
- » Turn off the TV from select switches
- » Control your TV from the Loxone App
- » TV can turn on & off to mimic occupancy when you're on vacation

For your convenience, descriptions of these features are explained in the glossary of this brochure.

Feel inspired for any size project

The options included in this brochure are meant to inspire you. If you only want to add smart functionality to part of your home or if you only want to implement a single feature in your new build or retrofit, then this is also possible. Speak to a Loxone installer about a solution that meets your needs and budget.



*Loxone Miniserver - Installed behind the scenes.
The brain of every smart installation.*

5 simple steps...

1. Planning

Your Loxone installer will be on hand to plan and design your solution. Get advice and tips about specific features and functions you'd like to have.

2. Wiring

Your Loxone installer will plan and oversee the wiring installation for the smart features you selected. They install and advise with the future in mind, should you ever want to add more features.

3. Implementation

Your Loxone installer will then be able to install the products based on your chosen features and set them up to meet your exact requirements.

4. Ready to go

At this point, you'll be able to start enjoying the benefits of your chosen features in your home.

5. Follow up and after care

Soon after, should you need to, you can check in with your Loxone installer about your settings and any lifestyle changes. You may also wish to arrange a future visit from your installer to discuss adding new features or making larger changes.

Features Glossary

Lighting

Presence-activated lighting

Lights will come on when a Presence Sensor detects motion.

Lights can mimic occupancy when you're out

As a deterrent, lights in your home turn on and off periodically making it seem like someone is at home.

Lights turn off automatically when not needed

Depending on the room, lights will turn off if no motion has been detected for a set period of time.

Conveniently switch off all lights from one switch when leaving your home

You'll never have to worry about lights being left on again. You can switch off all the lights in your house using the switch by your front door as you leave.

Factors in natural light levels

If a room is already filled with enough natural light the lights in that room will not turn on with motion to save energy.

Central monitoring and control of lighting in the app

You can conveniently check the app to see if lights are on or off and even control them whether you're at home or not.

Lights stay on if noise is detected in that room

If you are watching the TV in the living room, for example, the noise from this will keep the lights on even if no motion has been detected.

Dimmable lighting

The brightness levels of lights with this feature can either be adjusted in the app or set levels can be selected from a switch.

Night Mode lighting

When you're ready for bed, any motion in rooms with dimmable light will activate to gently light your path, without waking anyone who is still asleep.

Option for automatic porch lighting

Controls are made available for outside lights that you can address separately.

Undercounter/cabinet LED lighting

Additional task lighting available in select rooms which can be controlled separately to the main lighting in that room.

Option for lights to flash when doorbell is pressed

You can choose to have the lights in specific rooms flash subtly when the doorbell is pressed.

Colored lighting

This option of lighting can be set to almost any color you can think of. You can select predefined colors from the switch in that room or enjoy even more control from the app.

HVAC

Temperature and humidity monitoring

The temperature and humidity level in each room is measured with the built-in sensors in each switch.

Temperature is maintained when you're still in the room

If you are still in a room and the system is scheduled to turn off, the temperature will be maintained for as long as motion is detected.

Individual room control

You can set a suitable comfort temperature for each room in your home.

Frost Protection and Overheat Protection

Your HVAC system ensures the temperature in any room never drops below or rises above a set point.

Intelligent learning

Your system will learn how long it takes to reach the temperature that you have set for each room to ensure rooms are always the right temperature at the right time.

Statistic in the app

You can monitor the usage and performance of the heating and cooling throughout your home.

Weekly schedule with holidays and custom calendar entries

More than just a Monday to Sunday timer, you can customize exactly when the heating and cooling should be on or off, taking into account school & public holidays and when you're returning from vacation.

Optional maintenance reminders

Depending on your heat source you can be reminded of required annual maintenance, the changing of filters, etc.

Notifications of changes to the system

You can be notified should the system detect any unusual behavior.

Central monitoring and control of heating and cooling in the app

At a glance, you can see the current temperature in each room and whether the system is on in those rooms. You can also edit the heating and cooling schedule and define the various temperature set points.

Security

Presence-based burglar alarm

The burglar alarm is triggered if motion is detected inside your home when it shouldn't be.

Easy day and night arming options

Your burglar alarm can monitor different motion sensors, for example, upstairs or downstairs, based on whether you're arming the burglar alarm during the day, while everyone is out or at night while everyone is asleep.

App notifications when something is amiss

If the burglar alarm is triggered you will get a notification via the app, letting you know which sensor has triggered.

Lights can flash throughout your home when burglar alarm is triggered

You can choose to have the lights in your home linked to the burglar alarm so that they flash as a deterrent during a potential break-in.

Delayed arming feature

You can specify a set number of seconds before the alarm is armed giving you enough to leave your home after setting the alarm.

Multi-staged alarm

If your alarm is triggered, you will first receive a notification. Depending on the additional features in your home the next stages can include visual and audible elements.

History logs

In the app, you can view a recent history of the exact sensors that had led to the burglar alarm being triggered and at what time this happened.

Optional panic buttons

You can choose to include a feature whereby a long press on chosen switches can send a panic notification to other members of the household.

Central monitoring and control of burglar alarm in the app

For peace of mind, whether you are at home or away, you can view the status of your burglar alarm, as well as set or unset it from the app.

All speakers will sound if burglar alarm is triggered

You can choose to have any or all of the multiroom speakers in your home play an alarm siren sound, or a specific audio file of your choosing, if the burglar alarm is triggered.

Multiroom Audio / Multimedia

Play music in different rooms

Play and control the music in each room with speakers.

Music can start automatically when entering a room

You can choose to have music automatically start to play as you enter a room. You can customize which music starts to play, at what volume and at what time of the day this should happen for each room.

Control music from the switch

You can conveniently play & pause, control the volume and even change what's playing from the switch in that room.

Central control of music in the app

The app gives you complete control over what you want to play in each room. You can see at a glance which rooms music is playing in, change what's playing and adjust the volume.

Option to play predefined messages based on events in your home

Predefined messages and reminders that you have set can play through speakers in chosen rooms based on conditions such as time and date.

Record your own announcements to play in different rooms

In the app, you can record a quick voice note and choose to play it over the speakers in specific rooms.

Stream audio from Spotify & TuneIn

With support for Spotify & TuneIn, you can choose any music, radio station, podcasts, etc. from these services to play in your chosen rooms.

Play from your personal music collections

Music saved on a hard drive or USB stick can be played through the speakers in a specified room.

Support for Apple AirPlay

With AirPlay technology, you can play music from your iPhone, iPad or Mac through the speakers in a chosen room.

Option to have your favorite playlist wake you up the morning

You can have music or a radio station gradually start to play at a specific time in the morning to wake you up.

Set individual music favorites in each room

Depending on the room, you can choose to have a selection of your favorite music playlists, radio stations or podcasts conveniently available to select from the switch in that room.

Conveniently switch off audio from one switch when leaving your home

When leaving your home, you can turn off all music playing in any of the rooms from the switch by the front door.

Speakers play a notifications when you have a visitor

When someone presses the doorbell, a chime will play in the rooms with speakers. If music is already playing in a room, it will be paused for the chime to play and then the music will resume.

Option to automatically stop music in the living room when the TV is turned on

When you turn on your TV (compatible models) in the living room from the remote control, if there is music playing in the room the music will be stopped automatically.

Turn off the TV from selected switches

Turning the lights off in the living room from the switch in that room can also turn off the TV (compatible models). This also works when turning off all of the lights in your home from the switch by your front door.

Control your TV from the Loxone App

Compatible TVs can be controlled using the app on a smartphone or tablet.

TV can turn on & off to mimic occupancy when you're on holiday

As a deterrent, compatible TVs can be turned on for a set amount of time to mimic a routine - making it seem like someone is at home.

Access

HD video intercom to see and speak with anyone at your front door

With the app, on a smartphone or tablet, you will be able to see who is at your front door. You will also be able to answer the intercom to speak with your visitor.

Connect to your intercom even when you're not at home from the app

You can see and speak with visitors at your front door from the app, even when you're not at home.

Answering message

If you're not available to personally answer the intercom, you can use the app to choose to play a predefined message through the intercom based on who is at your front door.

Access and recent visitor history in the app

You can choose to have your intercom take a photo when someone presses your doorbell. From the app, you can view a recent history of your visitors as well as a log of when the keypad was used.

App notifications when someone rings the doorbell

Whether you're home or away, you will be notified that someone is at your front door from the app.

Keypad with fob reader to disarm burglar alarm

Each member of the household can conveniently disarm the burglar alarm using either a unique pincode or a secure fob.

Central Functions

Night Mode

Features can perform differently at night when it's time to rest for the family and the home. For example, changing the lighting, audio playing at lower volumes, the doorbell being muted and only certain sensors being monitored by the burglar alarm. This can be activated from a bedside switch or the app.

All Out Mode

Features can even perform differently when you're out for the day. This includes turning off all lighting and music, following a set heating and cooling schedule and arming the full burglar alarm. This can be activated from a switch in your hallway or from the app.

Room Off

The last person leaving a room can conveniently turn off all lighting and music with a simple double-tap on the switch in that room.

Away Mode

Features can perform differently when you are away for an extended period of time such as on vacation. This includes following a holiday heating and cooling schedule with Frost Protection, mimicking presence and setting the burglar alarm. This can be activated from within the app.

Potential for Customizable Modes

Speaking with your installer, you can choose to have additional operating modes set up based on the features you have chosen to have in your home. This can include an entertaining mode or vacation mode; whereby the lighting, HVAC and security perform differently.

Other

Free app control for the whole family

There is no limit to how many family members can download the free app. Speak to your Loxone installer about creating unique logins for each member of the household.

Option to create your own automatic rules

In the app you can create your own automation rules from your chosen features.

Option to create your own sequences

If you find that you are often using the same features together in the app, you can create your own sequence to trigger these actions together.

System Status messages

Similar to the lights on the dashboard in your car, the app will show you important information about your system.

Simple, unified switches

Interacting with the features in your home should not be complicated. A familiar switch in each room offers an intuitive and consistent ease of use for the whole family and any visitors.

Secure app connection with the option to connect when you're not at home

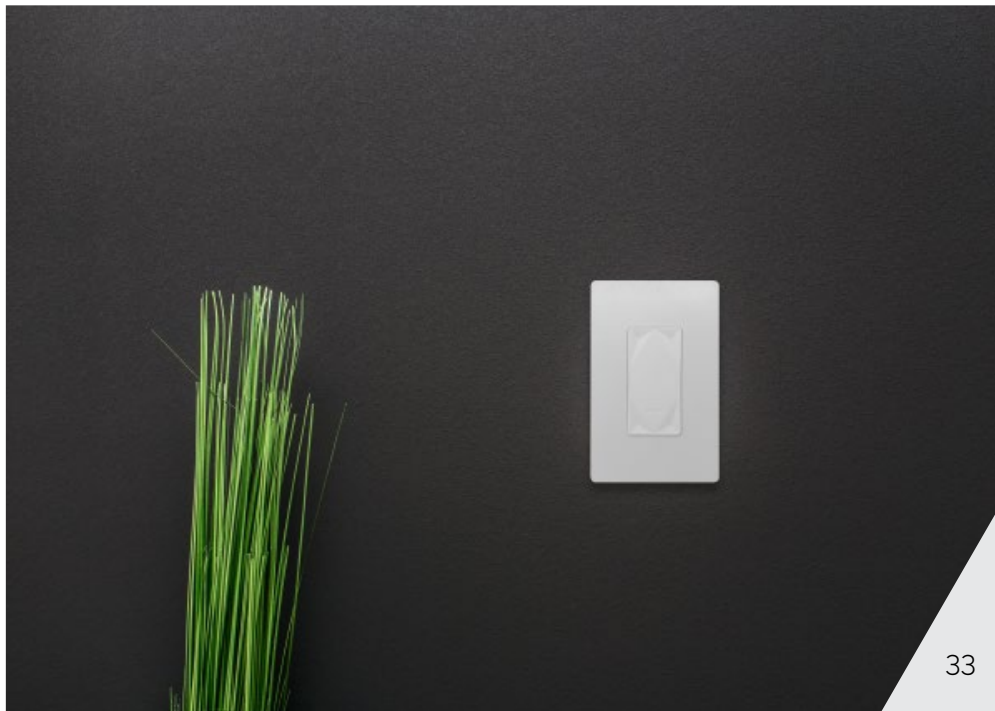
To protect your data and privacy, the app's communication with your home is fully encrypted. You can also choose to be able to connect to your home when you're out.

Smart bedside alarm clock with control for lighting

This stand alone device can be placed next to your bed, giving you another familiar point of control for the features in your home. It includes a built-in alarm clock and color-changing light.

Inspiration





Product Overview of Starter Package:

QTY	Article No.	Product Name
1	100038	Relay Extension
8	100317	Damper Tree 7"
1	100335	Miniserver
7	100425	Touch Tree
8	100422	Presence Sensor Tree White
1	200001	Power Supply 24V, (1.3A)
1	200143	Power Supply 24V (0.42A)

Note: This example includes only Loxone hardware. Additional 3rd party peripheral items and installation costs will be required. Installation must be carried out by a certified Loxone installer who will determine any additional requirements and costs based on your chosen features.

Product Overview of Elevated Package:

QTY	Article No.	Product Name
1	100420	Presence Sensor Air White
1	100043	Dimmer Extension 120V
1	100114	Air Base Extension
1	100239	RGBW 24V Dimmer Tree
8	100317	Damper Tree 7"
1	100335	Miniserver
1	100340	Touch Nightlight Air
4	100497	quadral In-Ceiling 7 Speaker
7	100425	Touch Tree
1	100428	Audioserver
8	100466	Flush-mounted Presence Sensor Tree White
1	100394	Tree Cable (Spooled)
1	200098	RGBW LED Strip 5m IP20
2	200143	Power Supply 24V, (0.42A)
1	500047	Power Supply 24V, (3.67A)
4	200150	Loxone Speaker Backbox

Note: This example includes only Loxone hardware. Additional 3rd party peripheral items and installation costs will be required. Installation must be carried out by a certified Loxone installer who will determine any additional requirements and costs based on your chosen features.

Product Overview of Premium Package:

QTY	Article No.	Product Name
1	100114	Air Base Extension
1	100141	IR Control Air
1	100201	Weather Service 10-Year
1	100218	Tree Extension
2	100239	RGBW 24V Dimmer Tree
8	100317	Damper Tree 7"
42	100330	LED Spot RGBW Tree White
1	100335	Miniserver
2	100340	Touch Nightlight Air
3	100370	LED Pendulum Slim Tree Anthracite
1	100428	Audioserver
1	100429	Stereo Extension
7	100461	Touch Pure Tree White
8	100466	Flush-mounted Presence Sensor Tree White
1	100480	NFC Code Touch Tree Anthracite

QTY	Article No.	Product Name
1	100485	Intercom Anthracite
1	100490	Double Mounting Bracket Anthracite
1	200035	Power Supply 24V (10A)
1	200099	RGBW LED Strip 5m IP65
1	200098	RGBW LED Strip 5m IP20
1	200143	24V Power Supply (0.4A)
1	100284	Touch Surface Tree
1	100420	Presence Sensor Air White
6	100497	quadral In-Ceiling 7 Speaker
6	200150	Loxone Speaker Backbox
1	100394	Tree Cable (Spooled)

Note: This example includes only Loxone hardware. Additional 3rd party peripheral items and installation costs will be required. Installation must be carried out by a certified Loxone installer who will determine any additional requirements and costs based on your chosen features.

Working with a Loxone installer

From the very first consultation to implementation and beyond, your Loxone installer will be there for you to make sure everything is always suiting your needs.

Loxone installers are independently owned and operated companies with experts who have been trained to recommend and install a solution that meets your needs.

You can find your nearest installer and available showrooms here:
loxone.com/partner

LOXONE

**Life happens fast.
Your smart home
is there for you.**



© Loxone Inc

