

An aerial photograph of a city skyline, likely Los Angeles, viewed from a hillside. In the foreground, several tall palm trees stand prominently against a backdrop of dense green foliage. The city skyline in the distance features numerous skyscrapers under a clear, bright sky. A large green triangle is positioned in the bottom right corner of the image.

# Rebuilding the Future: **Loxone Automation**

**LOXONE**



# A Green Future for a Resilient Los Angeles

**The recent wildfires in Los Angeles have left an undeniable mark on the city, impacting over 16,000 homes and businesses. As the city begins the path to recovery, this moment presents an opportunity not only to rebuild but to reimagine a smarter, safer, and more resilient future.**

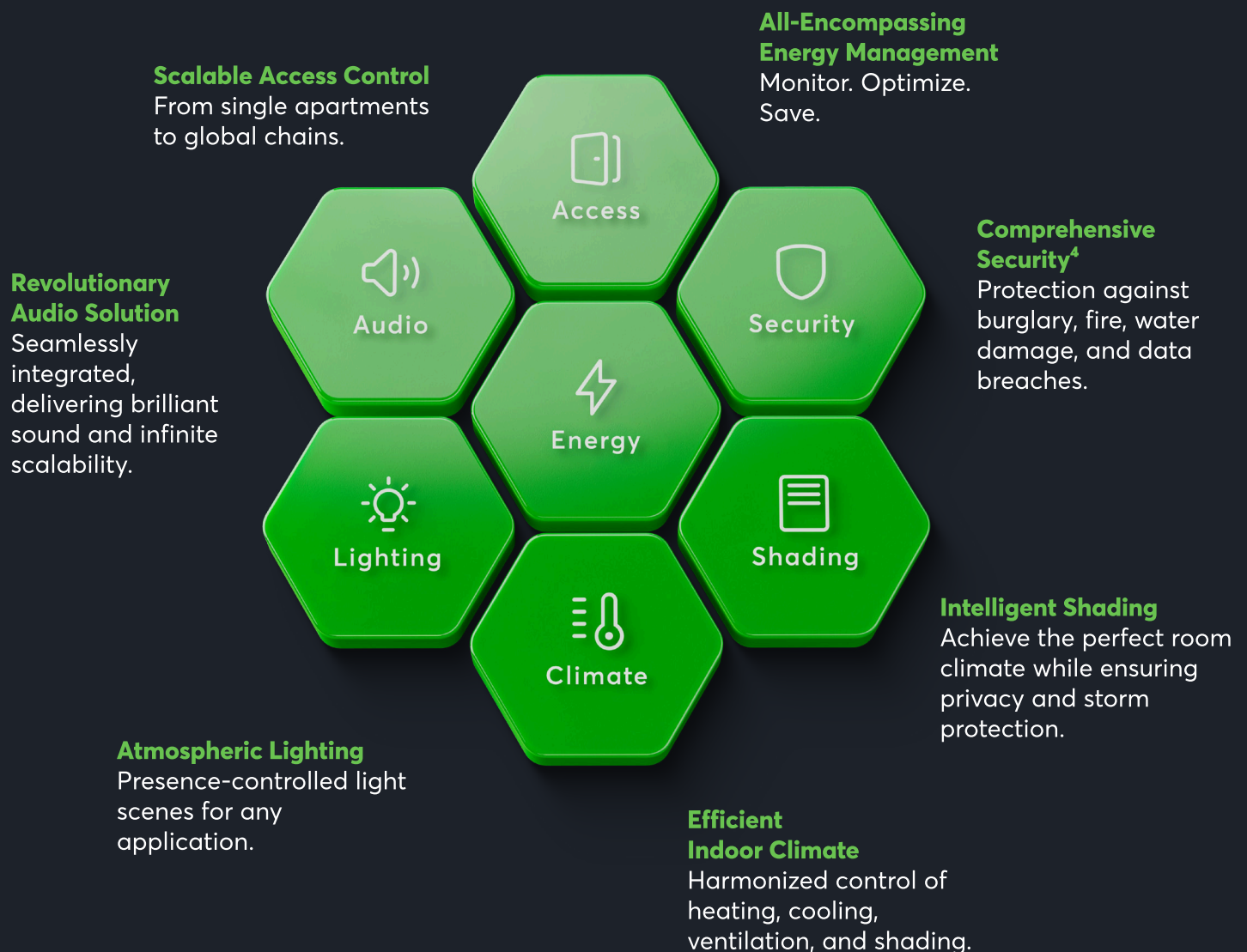
Loxone is committed to supporting the rebuilding efforts with innovative building automation solutions that enhance comfort, security, and efficiency. Our technology empowers homeowners and businesses to integrate intelligent automation that improves daily life while incorporating preventative measures to mitigate future losses.

This marketing bundle provides our business partners with the tools and resources needed to position Loxone as a key ally in rebuilding Los Angeles. Through strategic alignment with relief programs, experience options, and 1:1 planning + consulting, this package equips partners with knowledge and resources necessary to make projects successful and exceed demands.

Together, we can turn tragedy into transformation—building a stronger, more resilient Los Angeles with the power of automation.

# Limitless Function From a Single Source

From A for Audio to Z for Zoned Heating Control, the Miniserver handles a wide range of tasks, prioritizing security, convenience, and energy efficiency. Its highly flexible and scalable design ensures it can be tailored to meet the unique requirements of any project.



# Grow Your Business With Loxone

## Showhome (coming soon)



### IN-PERSON SHOWHOME

For our partners, the in-person showhome offers a powerful, hands-on way to showcase the Loxone system. **Featuring over 80 features designed for residential projects, this space allows your customers to interact directly with the hardware and software.**

You'll be able to demonstrate the full Loxone experience, offering a deeper understanding of how the system works in real-time. With live Q&A sessions with Loxone professionals, the showhome enhances customer engagement, ensuring a compelling and immersive sales experience.

## Digital Experience Tour



### DIGITAL EXPERIENCE TOUR

For our partners, the Digital Experience Tour is a cost-effective alternative or complement to the showroom. You can **easily and inexpensively showcase many Loxone features and products.** All a partner needs is a presentation space, the free Loxone Digital Experience Tour App and a selection of recommended products to make the customer experience even more engaging.



[More Information](#)

**10X PRODUCTIVITY & CREATE PROPOSALS IN JUST HOURS COMPARED TO DAYS.**

# Plan Faster, Sell More

Loxone provides partners resources to make projects successful from selling through installation. Reduce time spent educating, planning and installing to **increase productivity, profits and service offerings up to 10x** compared to conventional systems.

## PROJECT PLANNING

Get ready for project planning and proposals to be created faster and easier than ever before. **Create comprehensive proposals in just hours compared to days.** Proposals are automatically created based on Project Planning directly in our Config. Helpful tools such as the ability to search and replace items makes commissioning projects more effective for you to meet customer expectations.



Discover the **value** and **time savings** of a Loxone Smart Home vs a conventional home [here!](#)



More Information

## AUTO CONFIG

Partners report a **~66% reduction in programming time** and **50% time savings** wiring and learning in devices using Loxone compared to other systems.

Program basic to complex functions including lighting, HVAC, security & more, all together in one click, according to Loxone Standards & Recommendations. From there, specific needs for customers can be implemented in hours – not days.

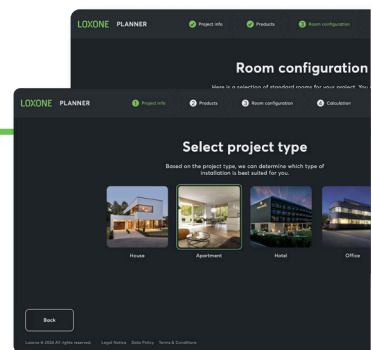
Once programming is finalized and saved to the Miniserver, the front-end app interface is built in parallel for you. You get full visualization of functions within our free app for smartphones or tablets.

The Loxone Planner

## Your Smart Home, Perfectly Planned

The Loxone Planner allows you to plan your projects within a few minutes and with just a couple of easy steps.

You will end up with a complete summary of all the features, technologies, and solutions your Smart Home has to offer.



More Information

# Work Smarter, Not Harder

Our core mission is to simplify the way people work and live. This is realized through our strategic, market-driven approach to creating solutions that prioritize real market needs, not stakeholder returns.

## A SINGLE PRODUCT ECOSYSTEM

For business partners, this means a **significantly reduced learning curve**, as they only need to master one system for both hardware and software. With fewer third-party integrations required, installations become more efficient and troubleshooting is simplified. This all-in-one approach enhances reliability and ensures a smooth user experience for homeowners. By streamlining automation, Loxone helps partners deliver high-quality projects with greater ease and efficiency.

## 80% REDUCED WIRING EFFORTS

We've set the standard for wiring automation systems with our Tree technology. A single cable can connect all Loxone devices in a room. Multiply that across a large residential project and you greatly reduce installation times and streamline troubleshooting. The flexible Tree topology makes branching out to other products—when needed—much easier than traditional wiring.

**Bonus: Explore our revolutionary Master/Client audio solution's reduced wiring.**

## SEAMLESS THIRD-PARTY INTEGRATION

Your project requirements vary greatly and we are prepared to help reduce barrier to entry with third-party devices. Our closed-open system allows partners to leverage 15+ protocols including Modbus, BACnet, DALI and DMX to integrate other system's products to work effectively with the Loxone.

## RETROFITS MADE EASY

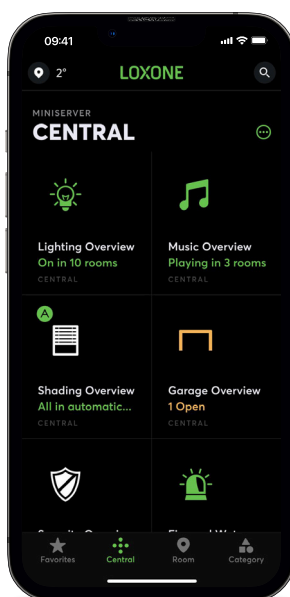
Loxone Air technology is a purpose-developed **wireless technology that allows for the creation of automation in installations that may not present the chance to pull cables**. Our wireless range of products offers intuitive automation and control without compromising functionality, making Air the perfect solution for retrofitting and renovation projects. Expand the types of projects you commission with Loxone's flexible wireless solutions.



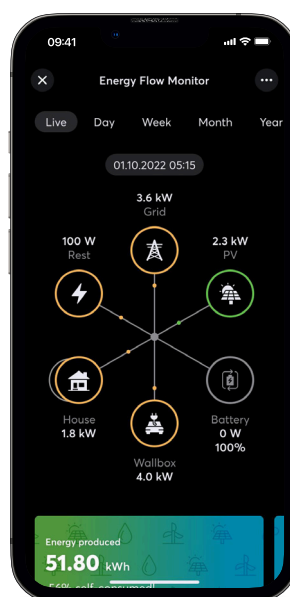


# App & Remote Control

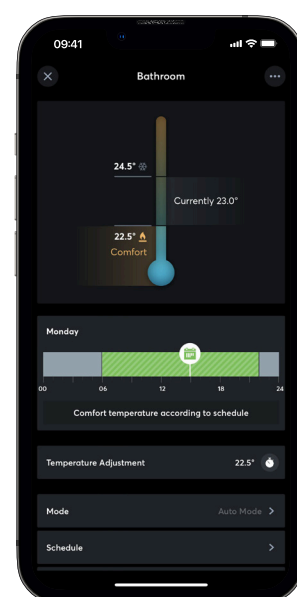
The Loxone app allows users to control and monitor their whole home from the palm of their hand. Easily adjust temperature, turn off lights or arm the alarm system. For times you are away, have peace of mind that your home is safe. The same control you have from your living room is accessible from anywhere in the world.



**Whole-home overview**  
at your fingertips



**Monitor** your home's  
energy usage at all times



**Easily adjust** each  
room's preferred climate



# Creating Unique Luxury Properties

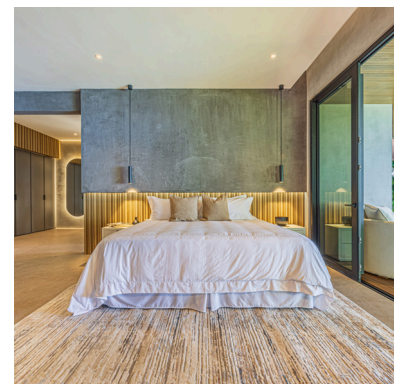
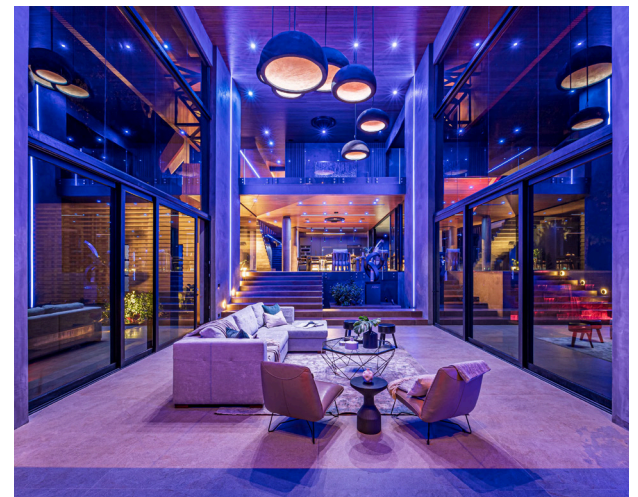
Thanks to the modern, minimalist aesthetic of Loxone hardware and control points, Alainz was able to equip this stunning home with all the modern amenities of automated smart living without compromising their design vision. Intelligent lighting, lossless audio, automated blinds, and intelligent climate control elevate comfort and living experience while weather stations, access control and a back-up power supply protect the home with an additional layer of safety, oversight and security.

*This unique vision, known as "Corazón de Selva," centers around a fully automated home experience that elevates everyday living.*

- Eric Bogantes Design Director, Alianz



More Information







# The Smartest Home in LA

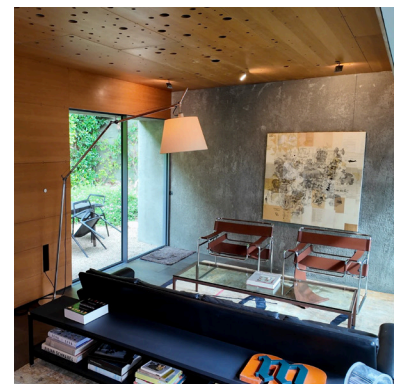
Some projects require more finesse than others - and that was certainly the case for Tree Logic when they integrated radiant climate control, water and pool heating, and energy management into this stunning architect-designed and owned home in Los Angeles. But between Loxone's aesthetic-forward hardware design and Tree Logic's mastery of smart home automation, the end result is a truly intelligent home powered by tech that compliments, rather than contrasts with, the homeowners design vision.

*"The nice thing about Loxone is we can add more functions at anytime. We really like the system from both a user standpoint and an integrators standpoint."*

– Jeff Landreth, Tree Logic Energy



More Information



### 1 US Small Business Administration (SBA) Disaster Loans

**Provider:**  
U.S. Small Business  
Administration



**Assistance Type:**  
Low-interest disaster loans

**Details:**  
Homeowners may apply for up to \$500,000 to replace or repair their primary residence. Additionally, homeowners and renters can borrow up to \$100,000 to replace or repair personal property, such as clothing, furniture, cars, and appliances, damaged or destroyed in the disaster. Eligible businesses and private non-profit organizations may borrow up to \$2 million to repair or replace damaged or destroyed real estate, machinery, equipment, inventory, and other business assets.

### 4 LA County Fire Recovery Fund

**Provider:**  
Los Angeles County  
**Assistance Type:**  
Direct financial relief



**Details:**  
The fund provides direct cash assistance to homeowners, renters, workers, small businesses, and nonprofits impacted by the wildfires. The specific amount of assistance for homeowners has not been detailed, but the fund aims to address immediate needs and support rebuilding efforts.

### 2 FEMA Individual Assistance Grants

**Provider:**  
Federal Emergency  
Management Agency (FEMA)



**Assistance Type:**  
Grants for housing and other  
needs

**Details:**  
Homeowners can receive grants for home repair and replacement, and for temporary housing, up to \$43,600. An additional \$43,600 is available to cover other needs, including medical expenses, vehicle damage, household items, funeral expenses, moving/storage, and childcare expenses.

### 5 Mortgage Relief Programs

**Provider:**  
Various financial institutions  
**Assistance Type:**  
Mortgage payment forbearance  
and relief



**Details:**  
Major lenders, including Bank of America, Citi, JPMorgan Chase, U.S. Bank, Wells Fargo, and BMO Bank, are offering relief options such as 90-day mortgage payment forbearance periods, relief from mortgage-related late fees, and protection from new foreclosures or evictions for at least 60 days.

### 3 Change Reaction Wildfire Direct Giving Fund

**Provider:**  
The Change Reaction  
(nonprofit organization)



**Assistance Type:**  
Immediate financial assistance

**Details:**  
Provides cash payments of up to \$5,000 to individuals affected by the wildfires to help meet urgent needs and avoid debt. The organization works through community leaders and social workers to facilitate quick disbursements, often within 48 hours.



# Drive Your Success

Access **pitch decks, videos, luxury home project planning** and more to confidently position your business and Loxone with decision makers and clients. All resources can be downloaded and shared directly through the QR codes below:

## Pitch Decks & Project Planning

Approach architects, lighting designers and other decision makers with confidence as you prepare to pitch Loxone for your next project.

Explore how our software reduces time planning, expedites proposals and programs nearly your entire project for you at the click of a button using Auto Config. Whether it's your first or tenth large residential project, we've developed a luxury project planning to help flatten the learning curve and provide you insights, tips and recommendations to make your next project a success.



More Information

## Videos

Automation can be hard to conceptualize and understand. These videos highlight user experience, features, benefits and more to.

Provide decision makers and clients with quick engaging and educational overviews of Loxone's entire ecosystem including lighting, HVAC, audio, security & access, shading and energy management



More Information



