

LOXONE

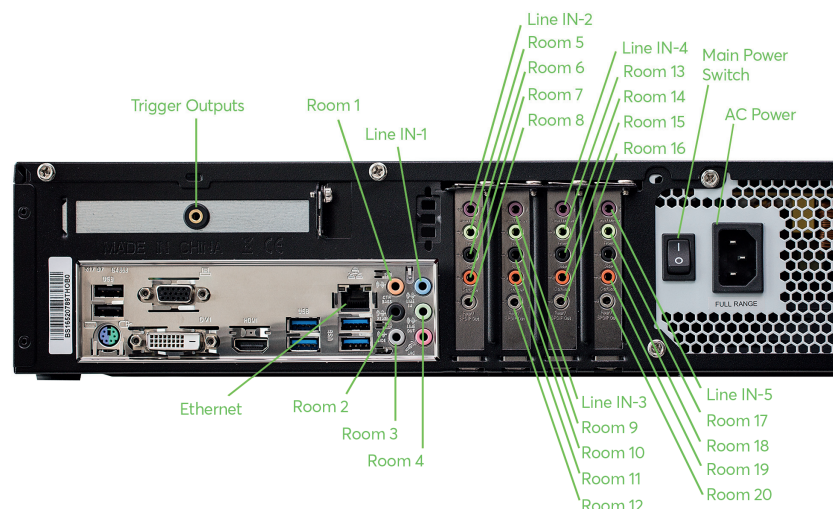
No Gimmicks.
Real Smart Homes.

Loxone Music Server Quick Start Guide

www.loxone.com

[A] HARDWARE INSTALLATION

- [1] Plug an Ethernet cable from your Router or Network switch, into the Ethernet port at the back of the Music Server.
- [2] Plug one of the included audio cables from the Music Server to the Amplifier (3.5mm Jack to RCA cable).
- [3] If required, connect the Trigger Outputs from the Music server to the Line input of your Amplifier (3.5mm to 3.5mm cable). The outputs of the Music Servers are as follows:
- [4] (Optional): Manual Setup Page: You can configure the network settings directly on your Music Server by connecting a USB mouse, keyboard and monitor.
- [5] Plug the power supply into the jack at the rear of the Music Server.
- [6] Start your Music Server by pressing the power button.



Loxone Music Server Quick Start Guide

[B] Software Setup

Upon initial start up, the Music Server will receive an IP address from your router. If your router does not automatically assign an IP address to the Music Server (DHCP), then you will need to assign an IP address manually. **Once the Music Server has finished its boot up procedures, please follow the steps below:**

- [1] Start Loxone Config and connect to your Miniserver.
- [2] Click on **"Peripherals Search"**

The search window will open as below:

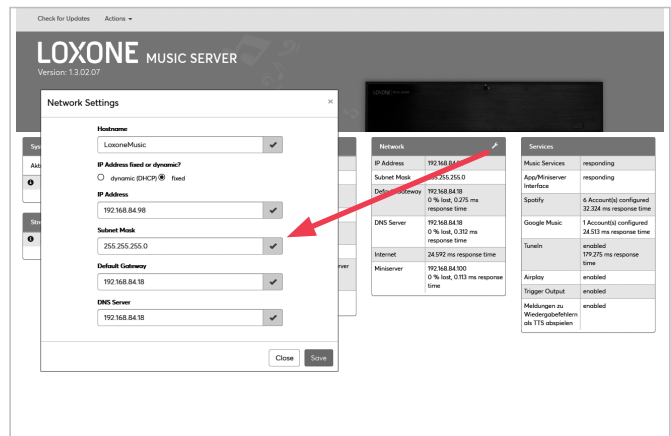
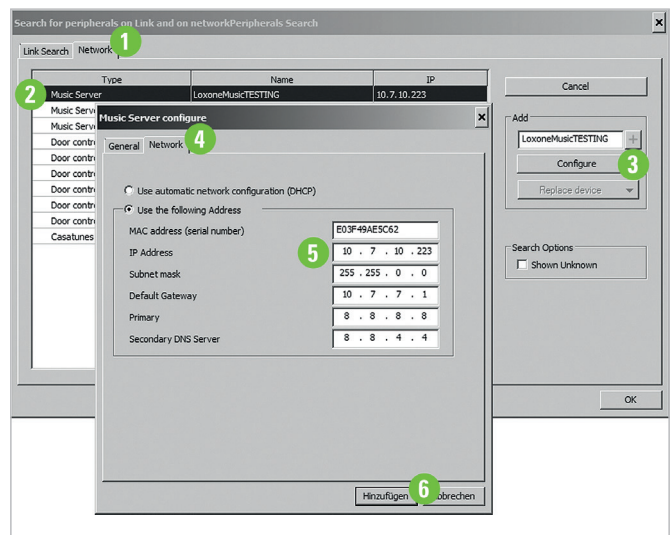
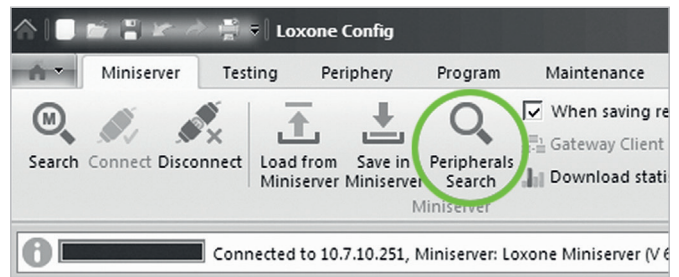
- [3] 1 – Click on the "Network" tab.
This will display all devices found on your network.
- 2 – Click on the Loxone Music Server
- 3 – Click on the "Configure" button
- 4 – Set a static IP Address for the Music Server by selecting "Use the following address" and entering the new IP Address details for the Music Server.
- 5 – The Music Server must have a static IP Address set to function reliably.
- 6 – Once done, click on "Save". The Music Server will now restart and apply the new settings.

These settings can be also be changed without a Miniserver or Loxone Config using the Manual Setup Page (See A.4).

[4] Checking the Network Settings:

Once your Music Server has restarted, you can open the Setup and Info-Page by typing `http://my.assigned.ip.address` into your web browser. (See B.3.5)

If you cannot access the page shown above, please double check your network settings and repeat the steps B.1 to B.3 or use the manual setup (A.4), to correctly configure your Network settings.



[C] Configuration of the Music Zones and Server Settings

Please check our online documentation for more info:
www.loxone.com/help/music-server